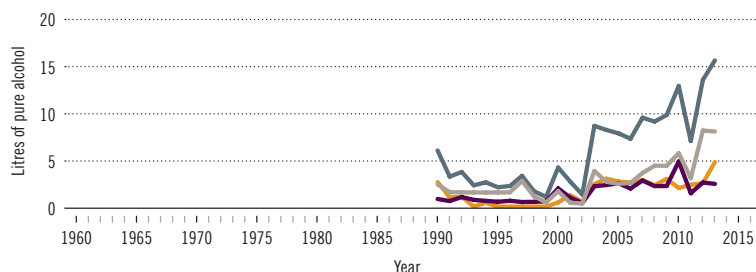


Cook Islands

Total population (2016): 20 947 ▶ Population aged 15 years and older (15+): 71% ▶ Population in urban areas: — ▶ Income group (World Bank): —

ALCOHOL CONSUMPTION: LEVELS AND PATTERNS

Recorded alcohol per capita (15+) consumption, 1961–2016



Recorded alcohol per capita (15+) consumption (in litres of pure alcohol) by type of alcoholic beverage, 2016 or latest year available

■ Beer
■ Wine
■ Spirits
■ Other
■ All



Alcohol per capita (15+) consumption (in litres of pure alcohol)

	2010*		2016*	
Recorded	10.0		10.0	
Unrecorded	0.6		0.6	
Total**	10.6		10.6	
Total males / females	17.5	3.8	17.5	3.7
WHO Western Pacific Region	7.0		7.3	

* Three-year averages of recorded and unrecorded for 2009–2011 and 2015–2017; **adjusted for tourist consumption.

Total alcohol per capita (15+) consumption, drinkers only (in litres of pure alcohol), 2016

	Litres
Males (15+)	27.2
Females (15+)	10.0
Both sexes (15+)	20.8

Prevalence of heavy episodic drinking* (%), 2016

	Population (15+ years)	Drinkers only (15+ years)	Population (15–19 years)	Drinkers only (15–19 years)
Males	57.9	89.8	44.6	91.6
Females	24.4	65.9	16.1	70.2
Both sexes	41.0	81.0	30.6	84.9

* Consumed at least 60 grams or more of pure alcohol on at least one occasion in the past 30 days.

Abstainers (%), 2016

	Males	Females	Both sexes
Lifetime abstainers (15+)	13.4	34.4	24.0
Former drinkers* (15+)	22.2	28.6	25.4
Abstainers (15+), past 12 months	35.5	63.0	49.4

* Persons who used to drink alcoholic beverages but have not done so in the past 12 months.

HEALTH CONSEQUENCES: MORTALITY AND MORBIDITY

Age-standardized death rates (ASDR) and alcohol-attributable fractions (AAF), 2016

	ASDR*		AAF (%)		AAD** (Number)
Liver cirrhosis, males / females	—	—	—	—	—
Road traffic injuries, males / females	—	—	—	—	—
Cancer, males / females	—	—	—	—	—

*Per 100 000 population (15+); **alcohol-attributable deaths, both sexes.

Years of life lost (YLL) score*, 2016

LEAST < 1 2 3 4 5 > MOST

* Based on alcohol-attributable years of life lost.

Prevalence of alcohol use disorders and alcohol dependence (%), 2016*

	Alcohol use disorders**	Alcohol dependence
Males	8.9	5.2
Females	1.8	0.7
Both sexes	5.3	2.9
WHO Western Pacific Region	4.7	2.3

* 12-month prevalence estimates (15+); **including alcohol dependence and harmful use of alcohol.

POLICIES AND INTERVENTIONS

Written national policy (adopted/revised) / National action plan	Yes (2009/2015) / Yes
Excise tax on beer / wine / spirits	Yes / Yes / Yes
National legal minimum age for off-premise sales of alcoholic beverages (beer / wine / spirits)	18 / 18 / 18
National legal minimum age for on-premise sales of alcoholic beverages (beer / wine / spirits)	18 / 18 / 18
Restrictions for on-/off-premise sales of alcoholic beverages (any):	
Hours, days / places, density	Yes, Yes / Yes, Yes
Specific events / intoxicated persons / petrol stations	Yes / Yes / Yes

National maximum legal blood alcohol concentration (BAC) when driving a vehicle (general / young / professional), in %	0.08 / 0.08 / 0.08
Legally binding regulations on alcohol advertising / product placement (any)	No / No
Legally binding regulations on alcohol sponsorship / sales promotion (any)	No / No
Legally required health warning labels on alcohol advertisements / containers (any)	No / No
National government support for community action (any)	—
National monitoring system(s) (any)	—